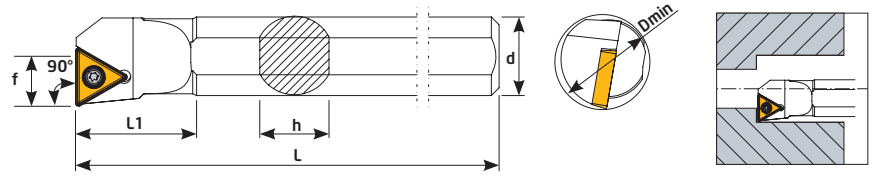
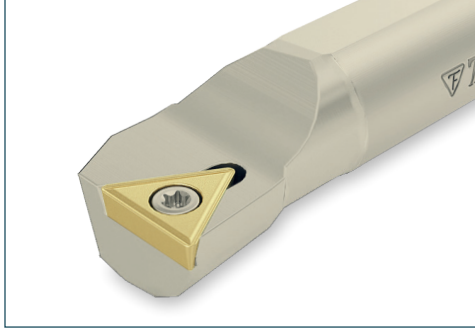
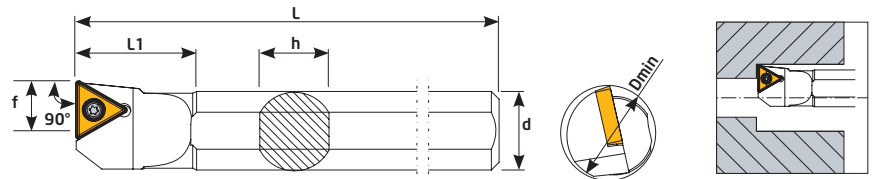


90° STFCR



| Sipariş Kodu Order Code Best.-Nr. | Stok/Stock/Lager | Ürün Kodu Product Code Produkt-Code | Ölçüler (mm) Dimensions(mm) Abmessungen (mm) | | | | | | | Kullanılan Uç Insert WSP | Sıkma Cıvatası Clamp Screw Torx-Schraube | Anahtar Torx Key Torx-Schlüssel |
|---|------------------|---|--|----|-----|----|----|----|-------|--------------------------------|--|---------------------------------------|
| | | | Dmin | d | L | L1 | f | h | kg | | | |
| K160 | ● | S12K STFCR 11 | 16 | 12 | 125 | 25 | 9 | 11 | 0,118 | TCMT 1102 | TC060 M2,5x5,5 | T8 |
| K161 | ● | S16Q STFCR 11 | 20 | 16 | 180 | 30 | 11 | 15 | 0,290 | | | |
| K162 | ● | S16Q STFCR 16 | 20 | 16 | 180 | 30 | 11 | 15 | 0,287 | TCMT 16T3 | TC067 M3,5x8,5 | T15 |
| K164 | ● | S20Q STFCR 16 | 25 | 20 | 180 | 32 | 13 | 18 | 0,440 | | | |
| K166 | ● | S25R STFCR 16 | 32 | 25 | 200 | 40 | 16 | 23 | 0,773 | | | |

90° STFCL



| Sipariş Kodu Order Code Best.-Nr. | Stok/Stock/Lager | Ürün Kodu Product Code Produkt-Code | Ölçüler (mm) Dimensions(mm) Abmessungen (mm) | | | | | | | Kullanılan Uç Insert WSP | Sıkma Cıvatası Clamp Screw Torx-Schraube | Anahtar Torx Key Torx-Schlüssel |
|---|------------------|---|--|----|-----|----|----|----|-------|--------------------------------|--|---------------------------------------|
| | | | Dmin | d | L | L1 | f | h | kg | | | |
| K184 | ● | S12K STFCL 11 | 16 | 12 | 125 | 25 | 9 | 11 | 0,118 | TCMT 1102 | TC060 M2,5x5,5 | T8 |
| K185 | ● | S16Q STFCL 11 | 20 | 16 | 180 | 30 | 11 | 15 | 0,290 | | | |
| K186 | ● | S16Q STFCL 16 | 20 | 16 | 180 | 30 | 11 | 15 | 0,287 | TCMT 16T3 | TC067 M3,5x8,5 | T15 |
| K187 | ● | S20Q STFCL 16 | 25 | 20 | 180 | 32 | 13 | 18 | 0,440 | | | |
| K188 | ● | S25R STFCL 16 | 32 | 25 | 200 | 40 | 16 | 23 | 0,773 | | | |