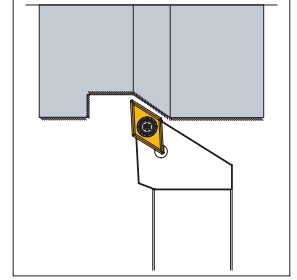
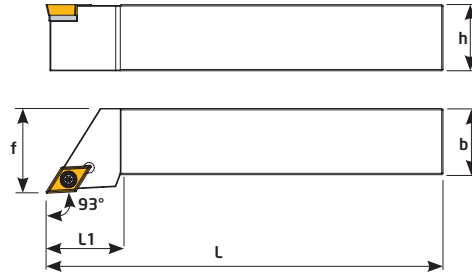
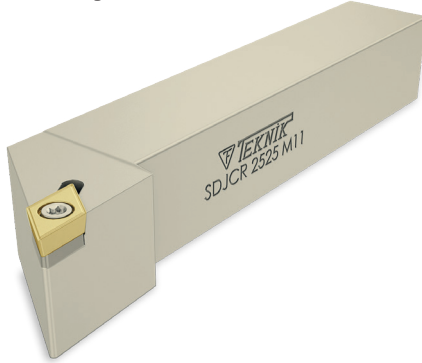
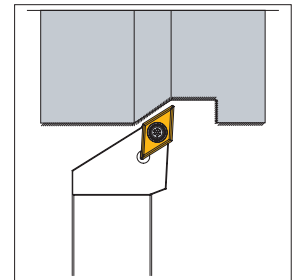
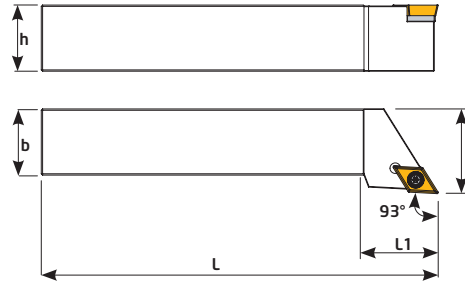


93° SDJCR



Sipariş Kodu Order Code Best.-Nr.	Stok/Stock/Lager	Ürün Kodu Product Code Produkt-Code	Ölçüler (mm) Dimensions(mm) Abmessungen (mm)							Kullanılan Uç Insert WSP	Sıkma Cıvatası Clamp Screw Torx-Schraube	Altlık Shim U-Platte	Altlık Cıvatası Shim Screw U-Platte Schraube	Anahtar Torx Key Torx-Schlüssel
			L	L1	h	f	b							
D220	●	SDJCR 1010 J07	110	15	10	12	10	0,097	DCMT 0702	TC060 M2,5x5,5	---	---	T8	
D222	●	SDJCR 1212 J11	110	20	12	16	12	0,132	DCMT 11T3	TC067 M3,5x8,5	---	---	T15	
D224	●	SDJCR 1616 H11	100	25	16	20	16	0,204		TC068 M3,5x11	TA030	TC048 M5		
D226	●	SDJCR 2020 K11	125	25	20	25	20	0,404						
D228	●	SDJCR 2525 M11	150	30	25	32	25	0,735						

93° SDJCL



Sipariş Kodu Order Code Best.-Nr.	Stok/Stock/Lager	Ürün Kodu Product Code Produkt-Code	Ölçüler (mm) Dimensions(mm) Abmessungen (mm)							Kullanılan Uç Insert WSP	Sıkma Cıvatası Clamp Screw Torx-Schraube	Altlık Shim U-Platte	Altlık Cıvatası Shim Screw U-Platte Schraube	Anahtar Torx Key Torx-Schlüssel
			L	L1	h	f	b							
D360	●	SDJCL 1010 J07	110	15	10	12	10	0,097	DCMT 0702	TC060 M2,5x5,5	---	---	T8	
D362	●	SDJCL 1212 J11	110	20	12	16	12	0,132	DCMT 11T3	TC067 M3,5x8,5	---	---	T15	
D364	●	SDJCL 1616 H11	100	25	16	20	16	0,204		TC068 M3,5x11	TA030	TC048 M5		
D366	●	SDJCL 2020 K11	125	25	20	25	20	0,404						
D368	●	SDJCL 2525 M11	150	30	25	32	25	0,735						